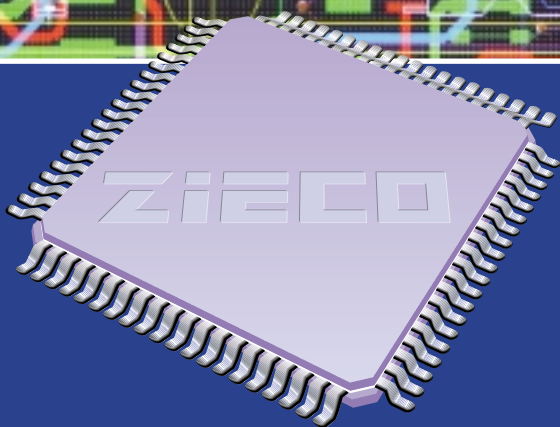
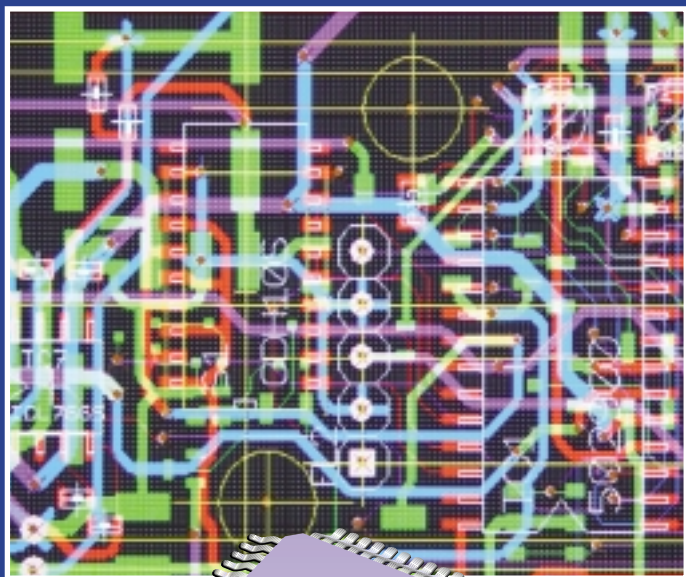


Bespoke Electronics Services

Connect direct to the benefits

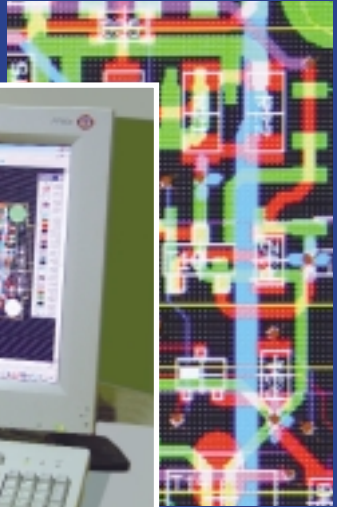
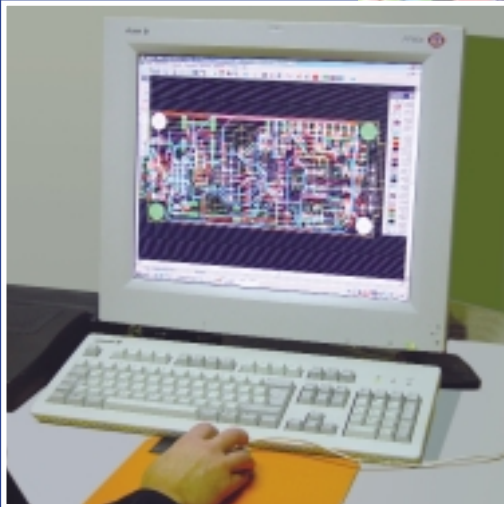


25 years of SMD/SMT know-how.

ZIECO



Development of customer specific layouts
Application of state-of-the-art technology
Small, medium and large batch production
Materials procurement



Development

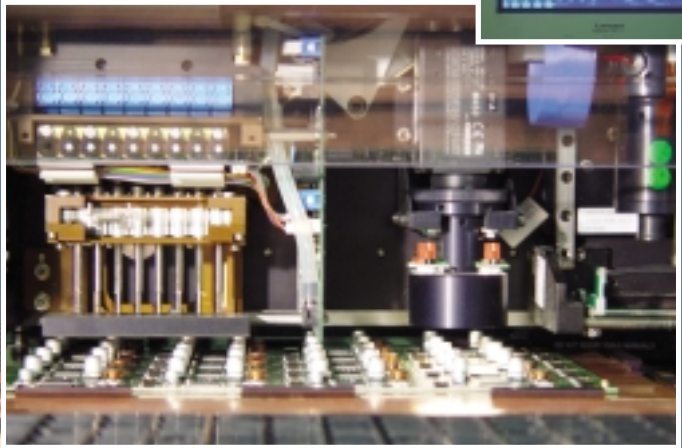
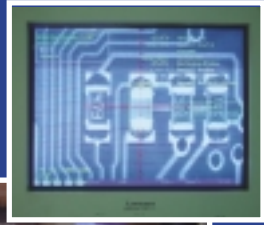
In terms of product development our strengths lie in the design of digital and analogue circuits. This encompasses both mechanical conceptualisation as well as the creation of test concepts.

We offer:

- The generation of customer specific layouts, including sample circuit boards.
- EMC optimised layouts.
- Production optimised layouts.
The potential for cost reduction both in terms of circuit board manufacture as well as board assembly.
- Modern CAD/CAM systems (Protel, Target, Eagle, Router Solution) make it possible to read many different formats of customer data for further processing, amendment and augmentation.

Production

State-of-the-art technologies combined with over 20 years of experience guarantee the high quality, cost-optimised and timely realisation of your projects:



Flexibility and Speed

Automatic assembly machines of the latest Mydata generation: TP9, TP11, My9 as well as Cosy Masterpick – with capacities of between 8,000 and 10,000 components per hour – enable us to assemble in both small and large batches.

Precision and Quality

The application of state-of-the-art technology guarantees the in-line testing of each component according to its specified electrical value and mechanical dimensions as an integral part of the assembly process. An integrated vision system ensures that the components are optically and mechanically centred. The quality of our production is further enhanced by the use of high precision robots to apply the solder paste as well as by circulation ovens (Harotec Reflow) that have independently controllable heat zones on both sides and clearly definable temperature profiles.



Our production services are completed by:

- Construction of prototypes,
- Materials procurement optimised in line with production,
- Quality and test procedures,
- Cost effective filter construction for the application of solder paste using a photoplottor (Filmstar). It is possible to process Gerber film data (standard and extended) as well as Eagle, Tiff data with high-resolution BMP and Postscript files.

Component and Equipment Assembly

We offer state-of-the-art production processes. However, it goes without saying that we will also undertake standard component assembly up to and including finished product assembly. Standard component assemblies can be soldered both by hand as well as using microprocessor controlled soldering equipment.





ZIECO GmbH
Tiroler Straße 38a
60596 Frankfurt am Main

Telephone +49 (0) 69/697667 - 0
Fax +49 (0) 69/697667 - 18 or - 19
www.zieco.de
info@zieco.de

